

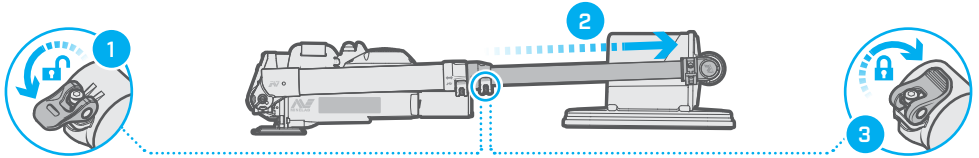
# Field Guide

## MDS-10 Dual Sensor Detector

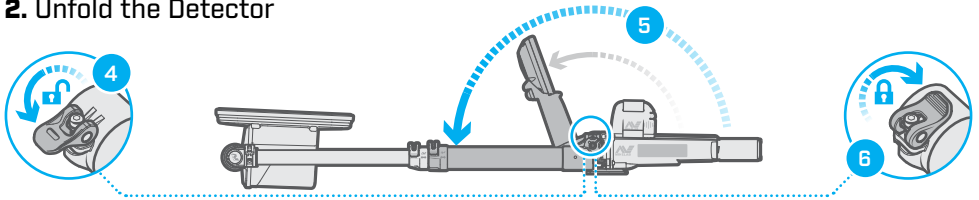
# MDS-10

## MDS-10 Unfolding Procedure

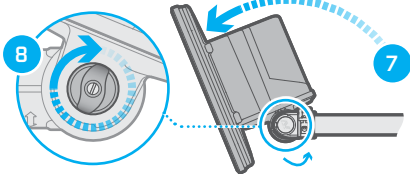
### 1. Extend the Lower Shaft



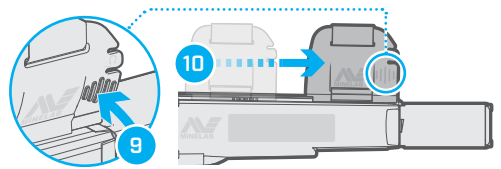
### 2. Unfold the Detector



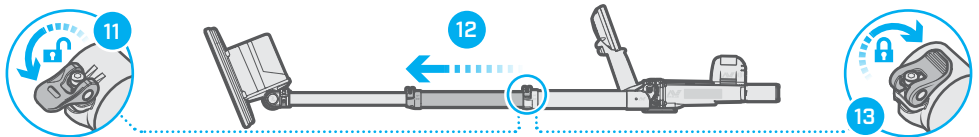
### 3. Unfold the Sensor Head



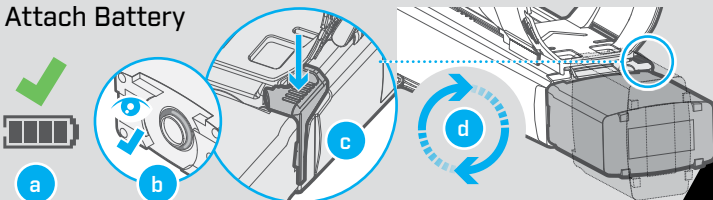
### 4. Position the Armrest



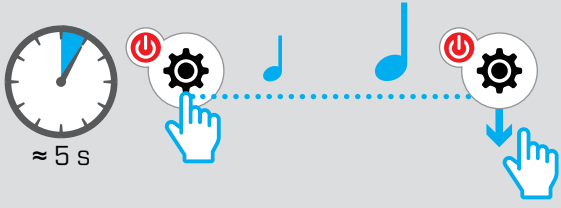
### 5. Extend the Middle Shaft



### Attach Battery

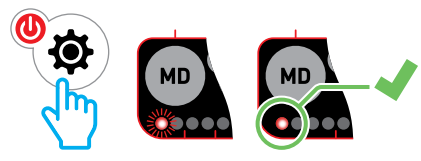


# Factory Reset

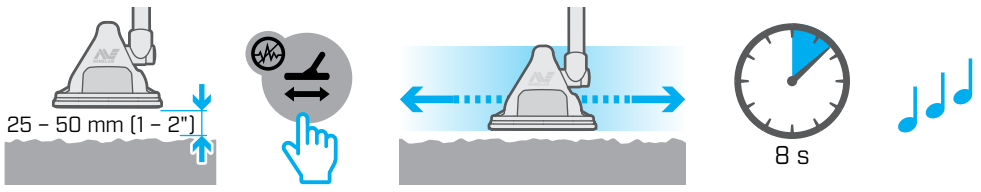


# Quick Start

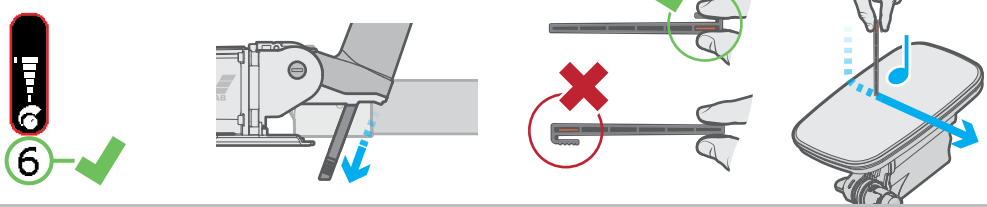
## 1. Turn On



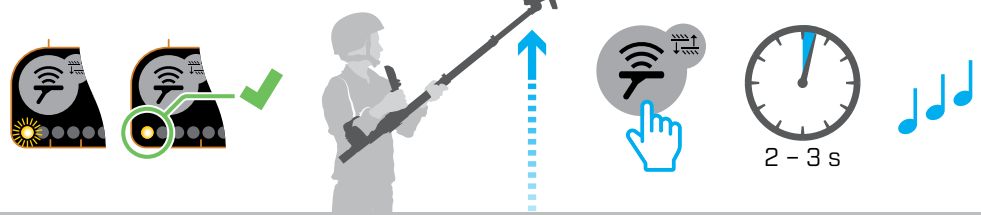
## 2. MD Ground Balance



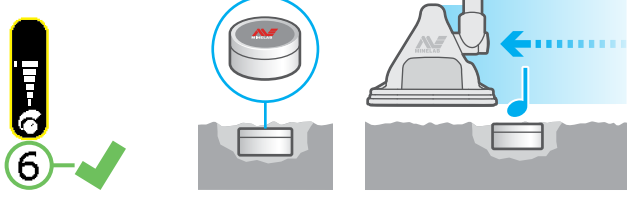
## 3. MD Test Piece



## 4. GPR Skyspot



## 5. GPR Test Target



## 6. Begin Detecting

